

# Bradley

customised excellence

**UNBELIEVABLE.**  
**TOUCHLESS**  
**CLEAN+RINSE+**  
**DRY.**

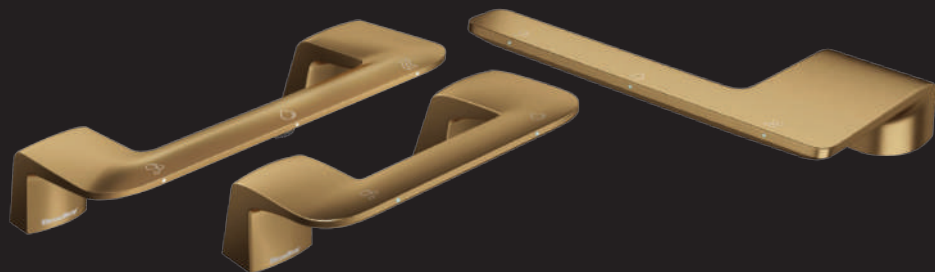
**WASHBAR®** SOLUTIONS

**UNTOUCHABLES**  
**TOUCHLESS**  
**TECHNOLOGY.**



THE  
TOUCHLESS  
RANGE





For half a century, Bradley Australia have manufactured and supplied the most comprehensive range of high-quality, competitively priced washroom accessories across a variety of industries including commercial, industrial, hospitality and residential.

Durability, design and attention to detail, combined with prompt delivery and easy installation make choosing Bradley as your trusted supplier, not just the right choice for your project, but for your business and bottom line.

Clients, suppliers and staff are all part of the one team. It's a core philosophy that has worked for fifty years and is used as the foundation of our continued success into the future.

Over the years, Bradley has sought to meet the individual needs of all clients and unique requirements of their one-off projects with our ability to produce and supply customised products cost effectively. No other supplier has the design capability or manufacturing control to create customised solutions the way Bradley can – working in partnership with clients to create products that will make your project stand out and your cost controller stand proud.

Our mantra of customised excellence goes well beyond the tangible facets of product design. For us, it's about customising the way we work at every stage of a project to help realise the vision, manage the timeline and costs and ultimately ensure that your life is easier and happier for having chosen Bradley Australia.

# Bradley

CLEAN.RINSE.DRY



ALL-IN-ONE

## Elegance and Performance Brought to Life.

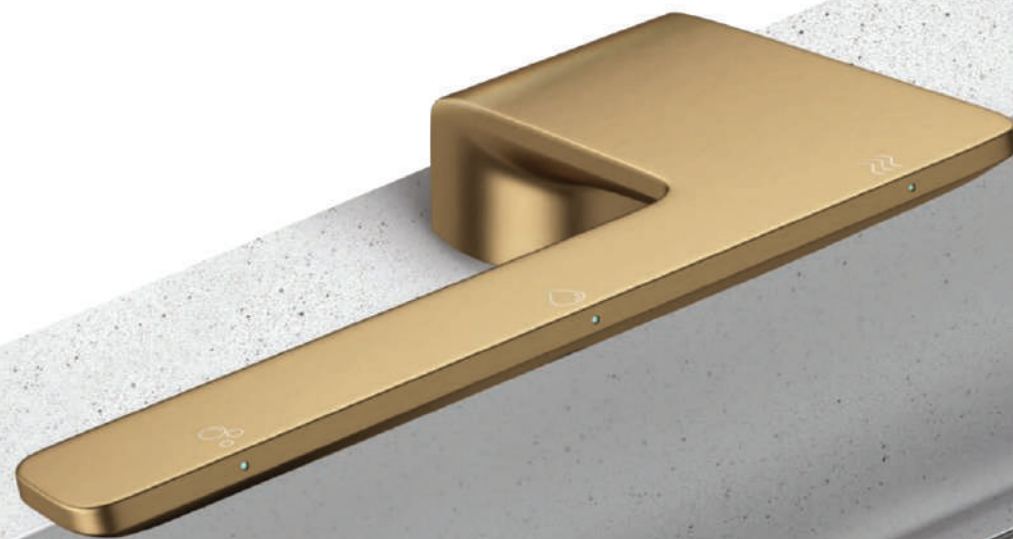
### Introducing Bradley's Award-Winning WashBar® Technology

From the inventor of all-in-one sink systems comes the WashBar. Providing a completely touchless handwashing experience, the WashBar houses soap, water and dryer in one intuitive and attractive unit. Thoughtfully designed to streamline the handwashing process, the WashBar transforms the washroom to a modern wash space free of clutter. With multiple shapes and finishes to choose from, this is the apex of commercial design brought to life.

Convenient handwashing. End soap and paper towel waste. Eliminate water splashing on users or dripping across the floor. Performance transformed.

This innovative solution for commercial washrooms is ADA compliant making it perfect for:

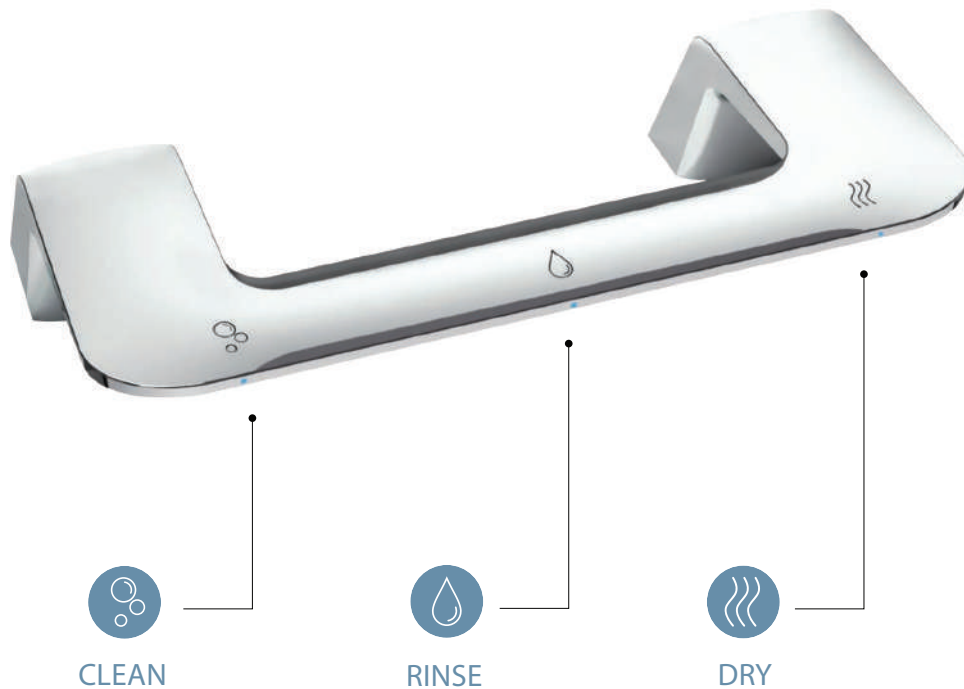
- Airports
- Aquariums and Museums
- Banks and Credit Unions
- Colleges, Schools and Universities
- Entertainment and Amusement Centers
- Healthcare and Office Buildings
- Restaurant and Retail Locations
- Transport Facilities



# All-in-One, Touch-Free WashBar

## Built-in Smart Technology

All the fundamentals of handwashing have been designed into our cutting-edge WashBar with care. The single piece, multifunction, chrome plated fixture, provides convenience and safety by keeping water off the floor. Easy-to-identify icons orient and guide the user, with LED lights changing from blue to green when a function is activated. The clean, rinse, and dry functions operate independently and will not accidentally activate their neighboring function. The WashBar transforms the handwashing experience.



## WashBar Advantage: Soap+Water+Dryer



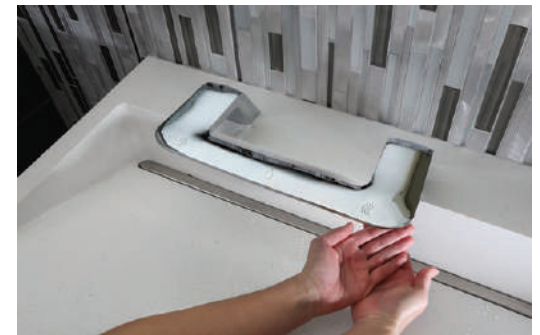
Liquid or foam soap  
Low level LED indicator  
3.8 L soap container requires fewer refills and saves on maintenance  
No soap tank to clean or worry about being contaminated



1.9 LPM  
Ultra-high efficient  
1.3 LPM option available for sustainable applications



12-15 second dry time  
Heated air stream for ultimate comfort  
Adjustable speed motor for faster or quieter hand drying (64-76 dB)  
96% less expensive than paper towels





**NEW**

Three designs in six gorgeous finishes, gives you the options to create beautiful and functional spaces.

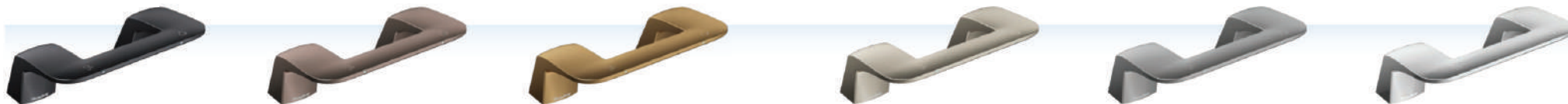
NEXT GENERATION WASHBAR



WASHBAR



WASHBAR DUO



BRUSHED BLACK STAINLESS

BRUSHED BRONZE

BRUSHED BRASS

BRUSHED NICKEL

BRUSHED STAINLESS

POLISHED CHROME



NEW

## Introducing Next Generation WashBar

Cutting-edge handwashing takes shape.

The award-winning all-in-one WashBar now comes in an ultra-modern design to make a statement in upscale commercial restrooms. The next generation WashBar raises your restroom to new heights by providing touch-free soap, water and drying in an edgy new design for an unforgettable handwashing experience. The thin L-shape seems to float above the sink for a striking and innovative aesthetic, using a single connection point to create a more open space for cleaning.



- Eliminates the cost and mess of paper towels
- Icons and LED lights to visually orient users
- Smart sensor technology eliminates false activations
- WashBar and bowl work together to keep water in the basin
- Captures soap and water activations for maintenance planning



Verge in Aruba with Next Generation WashBar in Polished Chrome

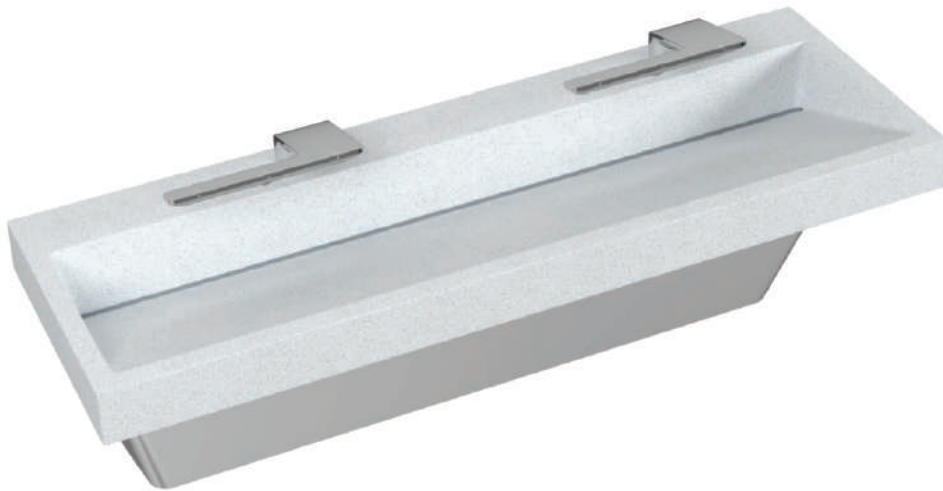


# Verge® with WashBar

## Sleek, Cast-Formed Basins in Natural Quartz

Made with Evero® Natural Quartz, the Verge® wash basin is cast-molded as one piece, and delivered to your project as a complete fixture to assure quality craftsmanship. Sleek, elegant and refined, the Verge was designed with architects and interior designers in mind.

The Verge basin has been engineered to work in harmony with the WashBar dryer, keeping water in the basin and floors dry, ensuring safety for all users.



# EVERO®

## The Elegance of Quartz with the Durability of Granite

Inspired by nature, Evero is the first and only quartz material that is cast-formed with no fabrication or seams. It is non-porous, completely seamless, and easy to clean and maintain. Virtually maintenance-free, Evero provides a refined look that will last a lifetime.

GREENGUARD Certified products are certified to GREENGUARD standards for low chemical emissions into indoor air during product usage. For more information, visit [ul.com/gg](http://ul.com/gg).



Verge in Antarctica with  
WashBar in Brushed Nickel

## LVQD1 All in one Basin WashBar

Washbar™ technology that includes Soap Dispenser, Tap and Hand dryer all in one piece.

This WashBar is convenient and easy to use. Following the simplistic natural step of a complete touchless operation by washing your hands with soap, rinsing with water and drying your hands, this step process is very hygienic and represents true convenience.

Simplicity in operation, this all in one WashBar eliminates hazardous wet floors and paper towel wastage. Perfect for high traffic areas, this is suitable for Accessible Commercial Bathrooms.

Basin is available in a selection of Evero colours.



# EVERO®

The Elegance of Quartz with the Durability of Granite

Inspired by nature, Evero is the first and only quartz material that is cast-formed with no fabrication or seams. It is non-porous, completely seamless, and easy to clean and maintain. Virtually maintenance-free, Evero provides a refined look that will last a lifetime.

GREENGUARD Certified products are certified to GREENGUARD standards for low chemical emissions into indoor air during product usage. For more information, visit [ul.com/gg](http://ul.com/gg).



Melbourne Airport



# WashBar with Undermount Basin

## Design without Limits

The elegance and simplicity of the WashBar can now be used with a complex deck design or special deck material. Pair the WashBar with a Terreon solid surface or Evero natural quartz cast-formed undermount basin to the deck or countertop of your choice. From granite to quartz to concrete, you can have it all to match your specific design goals.



Package includes WashBar (soap, faucet and dryer platforms), basin and optional access panel.



Undermount Basin in Designer White  
with WashBar in Polished Chrome

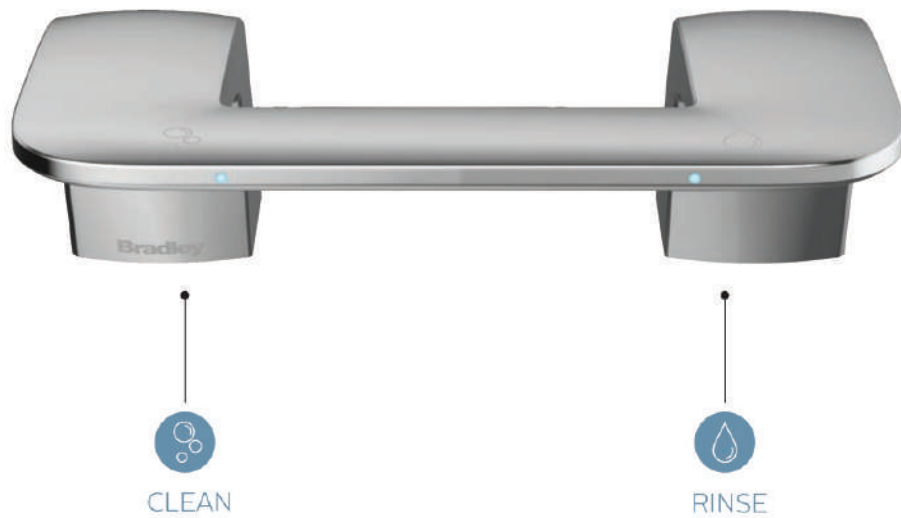


# WashBar Duo

## Simple and Sophisticated

Bradley's award-winning WashBar is now available as a 'Duo' with soap and faucet in a single fixture. Enjoy all the same soap and water advantages of the WashBar whilst keeping your commitment to paper contracts or preference of hand dryers.

The Duo is available with the Verge LVQ basin in Evero natural quartz, OmniDeck 5010 and Express GLX/TLX Series in Terreon solid surface, or as a stand alone unit.



Verge in Polar Ice with  
WashBar Duo in Polished Chrome

# Natural Beauty, Remarkable Performance.

Introducing Evero® Matte, a fresh new quartz option with a stone-like appearance for handwashing fixtures in commercial restrooms.

New Evero Matte will bring sophisticated elegance to your handwashing options and overall restroom design. The natural matte finish has a suede like feel to it yet will not show fingerprints. With one touch, you'll be drawn to its unique understated texture.



## EVERO®

The Elegance of Quartz with the Durability of Granite

Inspired by nature, Evero is the first and only quartz material that is cast-formed with no fabrication or seams. It is non-porous, completely seamless, and easy to clean and maintain. Virtually maintenance-free, Evero provides a refined look that will last a lifetime.

GREENGUARD Certified products are certified to GREENGUARD standards for low chemical emissions into indoor air during product usage. For more information, visit [ul.com/gg](http://ul.com/gg).





## NEW Options Available



## Slotted Drain Cap

Vandal resistant and provides greater ease in cleaning the trench drain.



## Smart Never Looked So Good

The all-in-one, touchless WashBar is the industry's best, bar none. Sleek and sophisticated, this award-winning product creates a handwashing experience that simply can't be touched. With clean, rinse and dry functionality housed in a single component, the WashBar creates an attractive, intuitive, touchless handwashing experience in a groundbreaking and engaging design.

The all-in-one WashBar is the smart solution you've been waiting for.







## SAFE

No more slipping on water  
dripped on the floor



## CLEAN

No more paper towel  
waste on the floor



## COMFORTABLE & ACCESSIBLE

Everything is within  
reach – design allows  
easier access for children  
and wheelchair users



AUSTRALIA  
49 Cawarra Road  
Caringbah NSW 2229  
[sales@bradleyaustralia.com](mailto:sales@bradleyaustralia.com)  
**1300 364 561**

**Bradley**  
AUSTRALIA

customised excellence